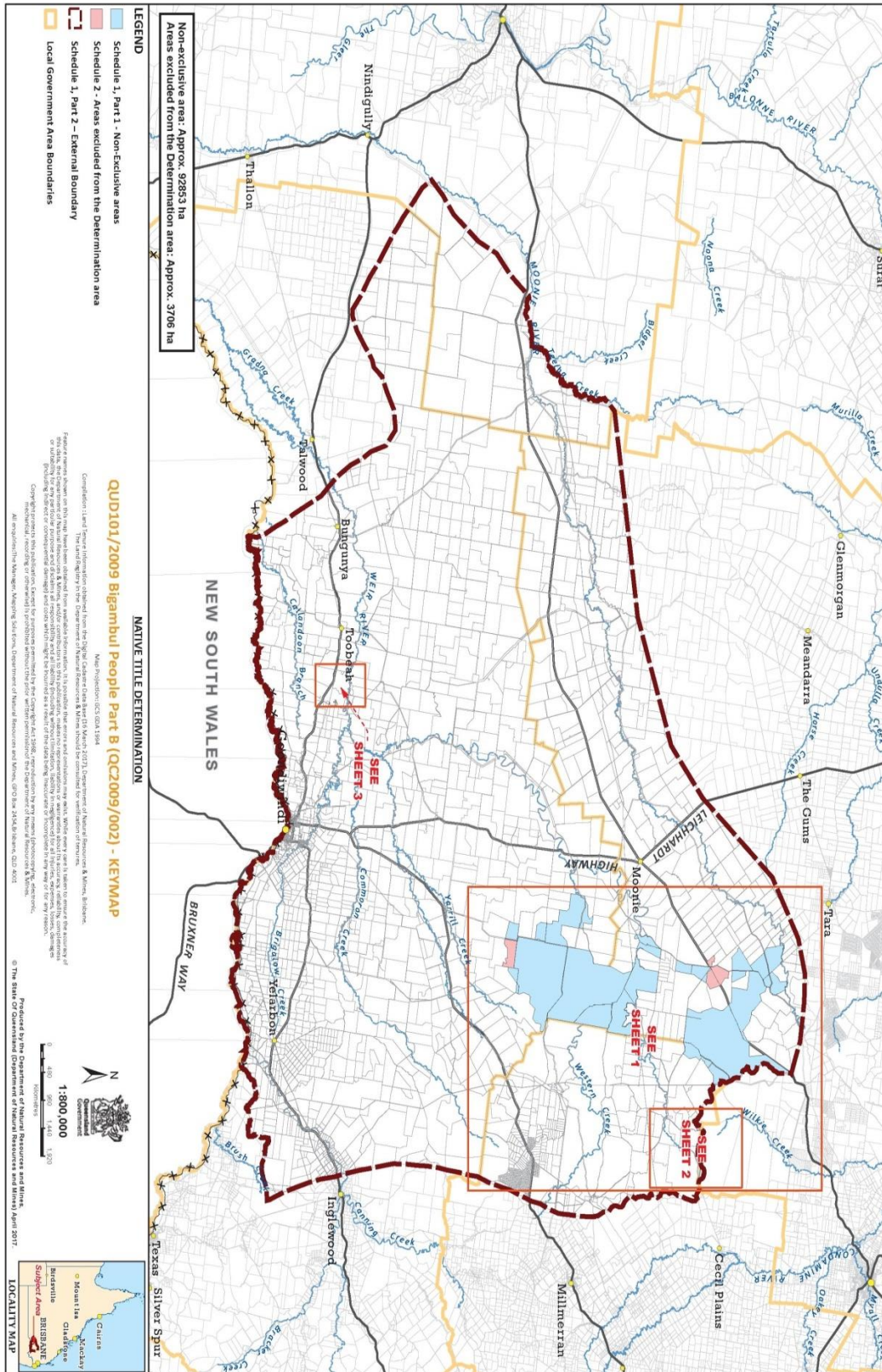
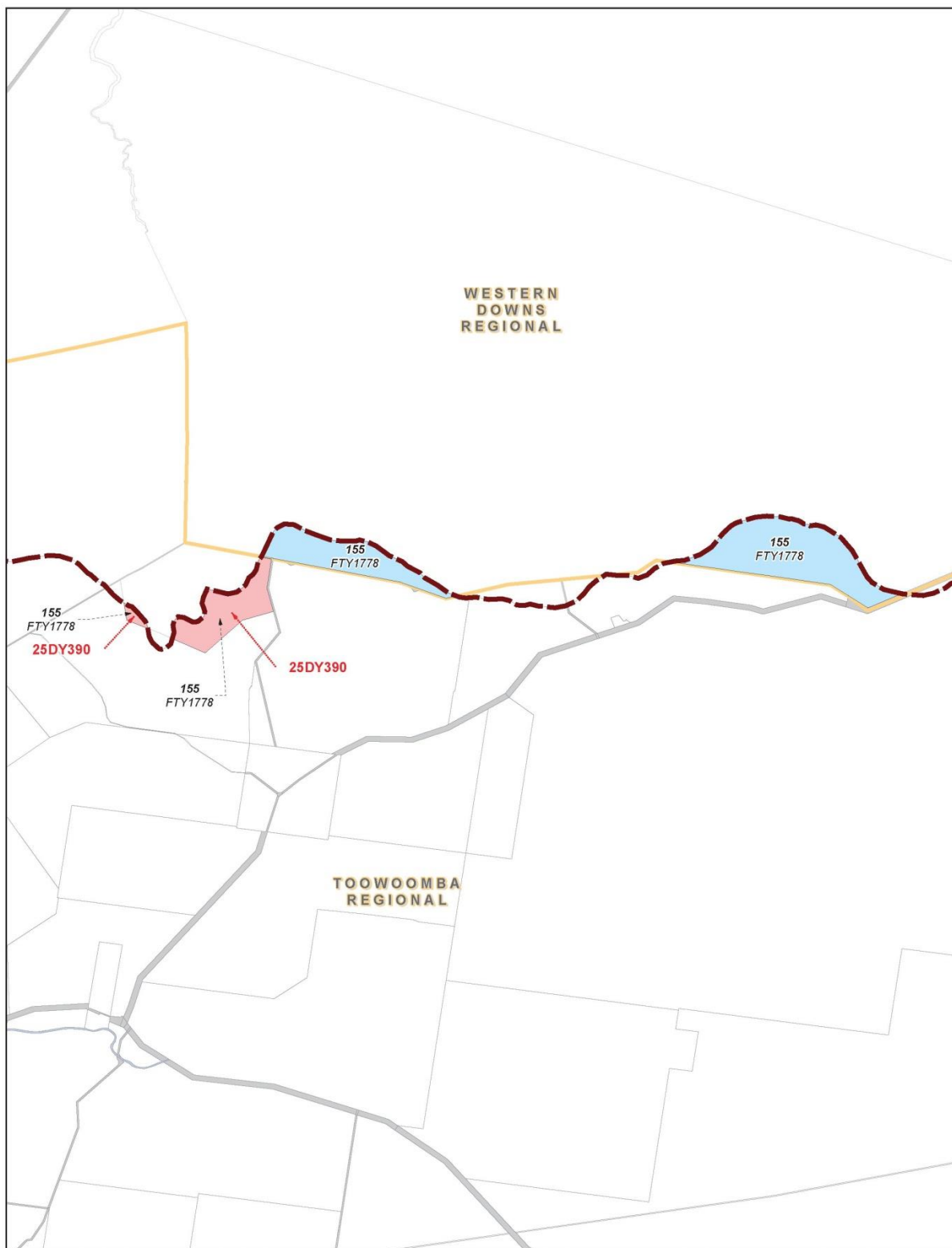


Part 3 — Map of Determination Area

Keymap



Sheet 2



LEGEND

- Schedule 1, Part 1 - Non-Exclusive areas
- Schedule 2 - Areas excluded from the Determination area
- Schedule 1, Part 2 - External Boundary
- Local Government Area Boundaries

NATIVE TITLE DETERMINATION

QUD101/2009 Bigambul People Part B (QC2009/002) Sheet 2 of 3


Compilation: Land Tenure Information obtained from the Digital Cadastral Data Base (16 March 2017), Department of Natural Resources & Mines, Brisbane. The Land Registry in the Department of Natural Resources & Mines should be consulted for verification of tenures.

Feature names shown on this map have been obtained from available information. It is possible that errors and omissions may exist. While every care is taken to ensure the accuracy of this data, the Department of Natural Resources & Mines, and/or contributors to this publication, makes no representation or warranties about its accuracy, reliability, completeness or suitability for any particular purpose and disclaims all responsibility and all liability (including without limitation, liability in negligence) for all injuries, expenses, losses, damages (including indirect or consequential damage) and costs which might be incurred as a result of the data being inaccurate or incomplete in any way or for any reason.


Copyright protects this publication. Except for purposes permitted by the Copyright Act 1968, reproduction by any means (photocopying, electronic, mechanical, recording or otherwise) is prohibited without the prior written permission of the Department of Natural Resources & Mines.

All enquiries: The Manager, Client Mapping Services, Department of Natural Resources and Mines, GPO Box 2454, Brisbane, QLD 4001

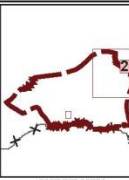
Produced by the Department of Natural Resources and Mines,
 © The State Of Queensland (Department of Natural Resources and Mines) March 2017.



1:65,000



Map Projection: GCS GDA 1994



SHEET KEY

Document Path: K:\CLAMINA\FQ09_02\Bigambul\Determinat...Map\Part B March 2017\NXD\QC09_02_Bigambul_PartB_A3P_Determination_Mapbook_Sheet2.mxd

Sheet 3



Document Path: K:\CLAIMMAP\Qcd09_02\Bigambul\Determinat..._Map\Determinat..._Map Part B March 2017\MXD\QCD09_02_Bigambul_PartB_A3P_Determination_Mapbook_Sheet3.mxd

- LEGEND**
- Schedule 1, Part 1 - Non-Exclusive areas
 - Schedule 2 - Areas excluded from the Determination area
 - Schedule 1, Part 2 - External Boundary
 - Local Government Area Boundaries

NATIVE TITLE DETERMINATION
QUD101/2009 Bigambul People Part B (QC2009/002) Sheet 3 of 3

Compilation: Land tenure information obtained from the Digital Cadastral Data Base (15 March 2017), Department of Natural Resources & Mines, Brisbane. The Land Registry in the Department of Natural Resources & Mines should be consulted for verification of tenures.

Feature names shown on this map have been obtained from available information. It is possible that errors and omissions may exist. While every care is taken to ensure the accuracy of this data, the Department of Natural Resources & Mines, and/or contributors to this publication, makes no representations or warranties about its accuracy, reliability, completeness or suitability for any particular purpose and disclaims all responsibility and liability (including without limitation, liability in negligence) for all injuries, expenses, losses, damages (including indirect or consequential damage) and costs which might be incurred as a result of the data being inaccurate or incomplete in any way or for any reason.

Copyright protects this publication. Except for purposes permitted by the Copyright Act 1968, reproduction by any means (photocopying, electronic, mechanical, recording or otherwise) is prohibited without the prior written permission of the Department of Natural Resources & Mines.

All enquiries The Manager, Client Mapping Services, Department of Natural Resources and Mines, GPO Box 2454 Brisbane, QLD 4001.

Produced by the Department of Natural Resources and Mines.
 © The State Of Queensland (Department of Natural Resources and Mines) March 2017.

1:35,000

0 0.3 0.6 0.9 1.2
Kilometres

Map Projection: GCS GDA 1994

